

Confidence
must be earned

Amundi
ASSET MANAGEMENT

Working Paper | Cross asset Investment Strategy

WP-71-2018

Tail Risk Adjusted Sharpe Ratio

RESEARCH
STRATEGY
& ANALYSIS

Document for the exclusive attention of professional clients, investment services providers and any other professional of the financial industry

Tail Risk Adjusted Sharpe Ratio

Abstract

Didier Maillard

Professor Emeritus at
CNAM, Senior Advisor
on Research - Amundi
didier.maillard-ext@amundi.com

The Sharpe Ratio has become a standard measure of portfolio management performance, taking into account the risk side. In that framework, the consideration of risk is reduced to returns volatility. The Sharpe Ratio does not encompass extreme risk, especially on the downside.

In this paper, we provide four methods for constructing Tail Risk Adjusted Sharpe Ratios (TRASR), using asymmetric measures of risk: semi variance, Value-at-Risk, Conditional Value-at-Risk (or Expected Shortfall) and expected utility derived measures of risks. We also have an exploration of the Aumann & Serrano's Economic Index of Riskiness.

The adjustment translates into an adjusted volatility, which allows us to keep the Sharpe Ratio format and to compare the impacts of the adjustments. For that, we use the Cornish-Fisher transformation to model tail risk, duly controlling for skewness and kurtosis.

Keywords: Risk, variance, volatility, skewness, kurtosis, portfolio performance

JEL Classification: C02, C51, G11, G32

Acknowledgement:

The author thanks Fabrice Barthélémy and Charles-Olivier Amédée-Manesme for valuable insights and discussions. He retains sole responsibility for the content.

About the author



Didier Maillard

Didier Maillard is Senior Advisor to Amundi on Research. He is Professor Emeritus at Conservatoire national des arts et métiers (CNAM), where he held a Chair of Banking. Previously, he has been an economist at the French Ministry of Finance and at the OECD (1980-1992) – economic forecasts, economic policy, public finance, tax studies, financial sector, and has occupied various positions at Paribas (and then BNP Paribas) from 1992 to 2001: chief economist, head of asset management, risk advisor. He is a graduate from Ecole polytechnique (Paris) and Ecole nationale d'administration.

His main fields are portfolio optimization, asset management, wealth management and tax incidence (in particular on investment return).

1 – Introduction

The Sharpe Ratio (SR) is a standard in the measurement of portfolio management performance, when risk is taken into account. The Sharpe ratio (Sharpe, 1966) is simply the ratio of an excess return (above a risk-free rate) to the volatility of returns. It may be extended to the ratio of the absolute return to volatility if there is no such thing as a risk-free asset. The risk-free asset may be replaced by a benchmark portfolio and the excess return compared to the benchmark divided by the volatility of the departures of returns compared to the benchmark, the tracking error. The Sharpe Ratio becomes an Information Ratio in such circumstances.

Volatility of returns is a crude measure of risk. It is symmetrical and does not put a special emphasis on very negative outcomes, which are assumed to be resented by investors. Given a mean return and a volatility, the Sharpe ratio is the same whatever the skewness and kurtosis of the distribution.

As a measure of performance, the Sharpe Ratio may be gamed by portfolio managers in various ways (Goetzmann & al., 2007), one of them being to build positions in negative skewness and excess kurtosis, the risk of which is not retraced in the Sharpe Ratio. Such risk premia do seem to exist, at least for negative skewness (Lempérière & al., 2014). In their study, the Sharpe ratio as traditionally defined seems to increase by $\frac{1}{4}$ times the negative skewness of the returns.

The association of negative skewness with a positive risk premium has also been explored by Feunou, Jahan-Parvar and Okou (2017), under the qualification of downside variance.

The shortcomings of the Sharpe ratio with respect to the description of risk are known for a long time. Some alternative measures taking into account the asymmetry of the returns distribution have been proposed: The Sortino ratio, Omega statistics and Kappa performance measures (Kaplan & Knowles, 2004). Goetzmann & al. propose a manipulation-proof performance measure (MPPM) which does take into account skewness and kurtosis. Their measure is very similar to that developed independently by Morningstar (2006).

The Sortino ratio is similar to the Sharpe ratio in that it divides a mean return by the square root of the sum of squared deviations from a threshold, but only when those are negative. If the threshold corresponds to the mean of distribution, that sum is often called the semi-variance.

Some authors (Amédée-Manesme & al., 2015, for example), divide the mean return by a Value-at-Risk (VaR) at a certain threshold.

The problem with those corrections is that one loses the scaling of the Sharpe ratio, a non-dimensional number the range of which academics and professionals are used to.

The aim of our paper is simple but goes a relatively long way: it is to provide a measure of risk-adjusted performance which coincides with the Sharpe ratio when the distribution of returns is Gaussian but which also takes into account tail risk when the distribution is not Gaussian. We will call it a tail-risk adjusted Sharpe ration, or TRaSR. It will be ratio of the mean performance to a tail-risk adjusted volatility.

We will then explore the impact of skewness and kurtosis on the measure by using the Cornish-Fisher transformation which allows to model distributions with a controlled tail risk.

2 – Adjusting the Sharpe ratio for tail risk

What we target is a measure that will coincide with the usual Sharpe Ratio when the returns are near to Gaussian; and that will impose a penalty when one is faced with extremely negative outcomes.

$$SR = \frac{\mu - r_f}{\sigma}$$

$$TRaSR = \frac{\mu - r_f}{\sigma_a}$$

The adjusted volatility will be equal to the actual volatility when the returns are Gaussian. It will be deigned to penalize negative skewness and excess kurtosis. We will build such adjusted volatilities for four types of risk measures:

- Semi-variance
- Value-at-Risk (VaR)

- Conditional Value-at-Risk (CVaR), aka Expected Shortfall
- Manipulation Proof Performance Measure (MPPM)

We will also explore the Aumann and Serrano Index of Riskiness, adapted to the performance of investments.

We will map the sensitivity of the adjustment to negative skewness and excess kurtosis by using a Cornish-Fisher transformation which allows one to generate distributions with the desired characteristics for a wide range of third and fourth moments.

3 – The Cornish-Fisher transformation

The Cornish-Fisher transformation and the proper way to use it are described in Maillard (2012). It consists of transforming the quantiles of the normal standard distribution z into quantiles of a new distribution Z allowing for a controlled skewness and kurtosis.

$$Z = z + (z^2 - 1)\frac{S}{6} + (z^3 - 3z)\frac{K}{24} - (2z^3 - 5z)\frac{S^2}{36}$$

In that expression, S and K are parameters which allow to control for skewness and kurtosis, but are not the actual values of the skewness and kurtosis of the transformed distribution. The value of the first four moments of the distribution are given in Appendix.

Note that to obtain a unitary variance of the transformed distribution, we have to divide the resulting quantiles by the square root of $M2$ given in appendix².

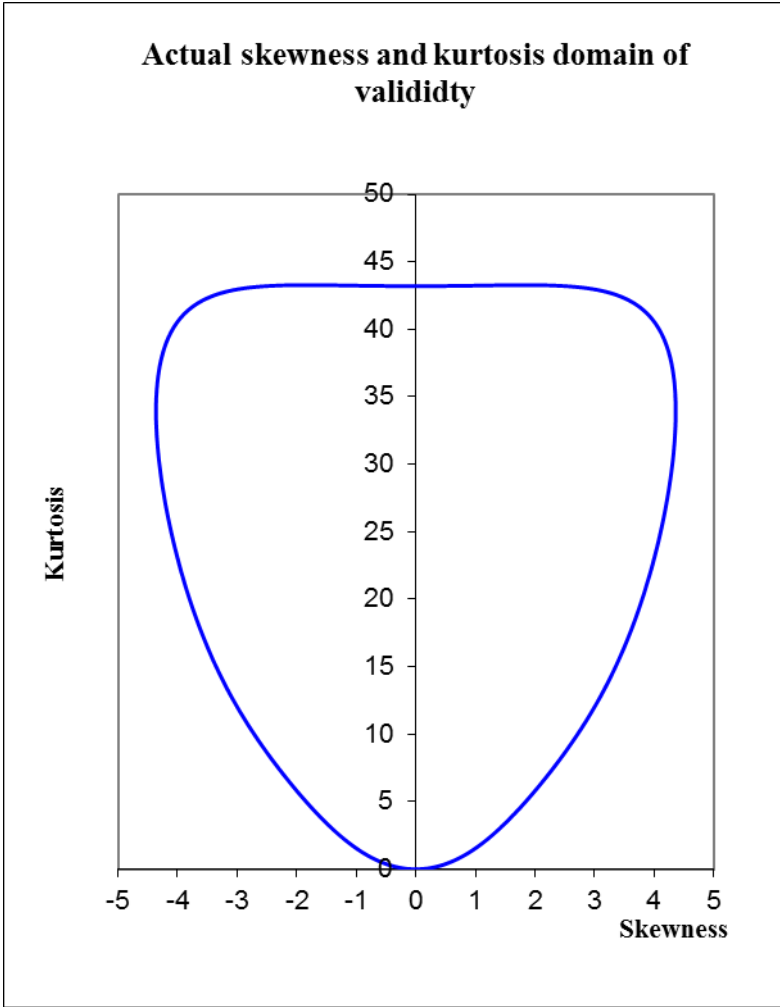
To obtain a distribution with zero mean, unitary variance, and desired skewness \hat{S} and kurtosis \hat{K} , we have to reverse the expressions given in Appendix to obtain parameters S and K (a resolution along the response surface method is the object of a forthcoming paper³).

² We will in fact use in the modelling of the quantiles (49999) in our numerical applications, the following

$$\text{transformation : } Z' = \frac{z + (z^2 - 1)\frac{S}{6} + (z^3 - 3z)\frac{K}{24} - (2z^3 - 5z)\frac{S^2}{36}}{\sqrt{1 + \frac{1}{96}K^2 + \frac{25}{1296}S^4 - \frac{1}{36}KS^2}}$$

An important caveat in the use of the transformation is that it should correspond to a true probability law, i.e. adding to one (which is respected) and non-negativity, meaning here that quantiles are uniformly increasing. This leads to a domain of validity which is convenient for most asset and portfolio returns.

Chart 1



This domain of validity is much larger than one obtained using Gramm-Charlier transformations of the probability law.

³ “Computation of the corrected Cornish–Fisher expansion using the response surface methodology: application to **VaR** and **CvaR**”, Charles-Olivier Amédée-Manesme, Fabrice Barthélémy and Didier Maillard, Annals of Operations Research (2018)

4 – Adjustment with semi variance

If Φ is the probability distribution of mean 0 and variance 1, the semi-variance will be equal to:

$$SV = \int_{-\infty}^0 \varepsilon^2 \Phi(\varepsilon) d\varepsilon$$

If the distribution is Gaussian, it is obvious that:

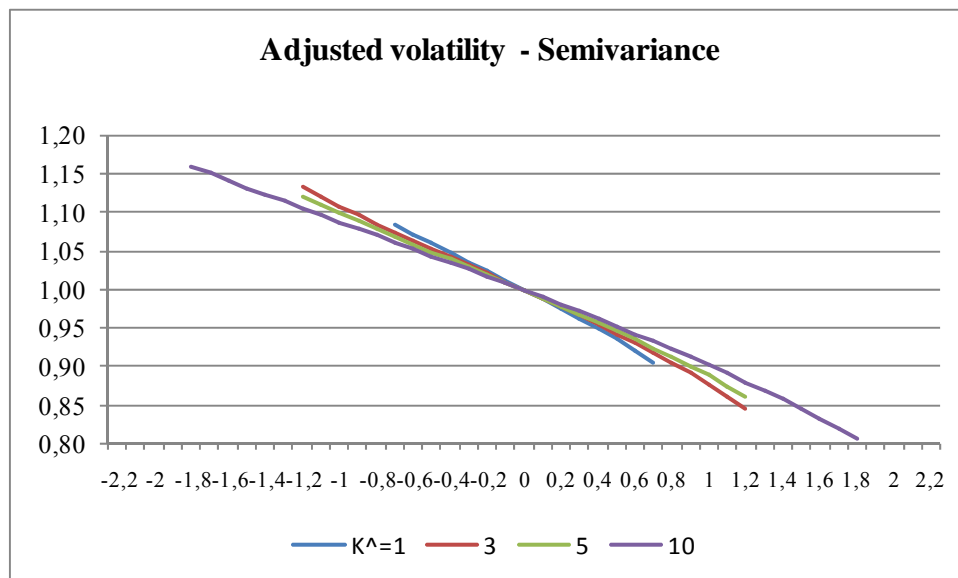
$$SV = \frac{1}{2}V = \frac{1}{2}$$

For a non-Gaussian distribution, we will compute SV as above, and correct the volatility of the TRaSR as:

$$\sigma_a = \sigma \frac{\sqrt{SV}}{\sqrt{1/2}} = \sigma \sqrt{2SV}$$

The chart below gives the adjusted volatility (divided by the actual volatility) as a function of skewness for some levels of kurtosis.

Chart 2



Two main findings appear. The first one is that the dependence on kurtosis is small. It is nil when there is no skewness (which is expected). The second one is that the dependency on skewness is nearly linear and that one point of negative skewness increases the tail-risk adjusted volatility by around 10 %, and thus decreases the Sharpe ratio by a near identical percentage.

For further work, we could explore the denominator of Sortino ratios at various thresholds

$$D = \int_{-\infty}^r \varepsilon^2 \Phi(\varepsilon) d\varepsilon$$

And transform them into tail-risk adjusted volatilities.

4 – Adjustment with Value-at-Risk

For any distribution (centred) with quantiles Z , value-at-risk (centred and reduced) at confidence level $1-\alpha$ is:

$$VaR_{1-\alpha} = -\sigma Z_{\alpha}$$

For a Gaussian distribution, value-at-risk (centred) at confidence level $1-\alpha$ is:

$$VaR_{1-\alpha} = \sigma v_{\alpha} = -\sigma z_{\alpha} = -\sigma N^{-1}(\alpha)$$

We will thus define the tail-risk adjusted volatility as the volatility at which the Gaussian distribution gives the same VaR as the actual Var.

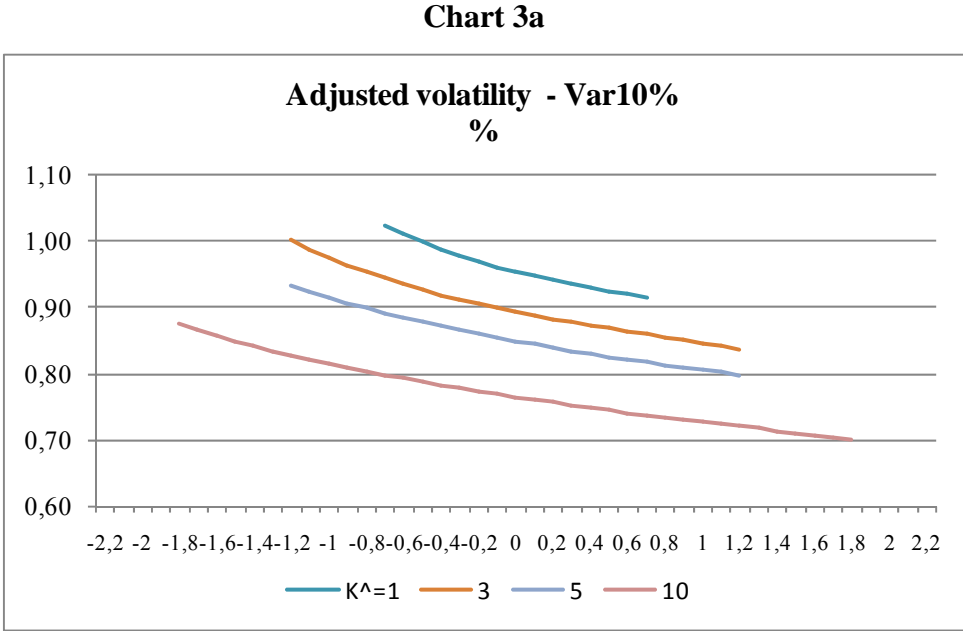
$$-\sigma_a z_{\alpha} = -\sigma Z_{\alpha}$$

$$\frac{\sigma_a}{\sigma} = \frac{Z_{\alpha}}{z_{\alpha}}$$

$$-Z_{\alpha} = v_{\alpha} + (1 - v_{\alpha}^2) \frac{S}{6} + (5v_{\alpha} - 2v_{\alpha}^3) \frac{S^2}{36} + (v_{\alpha}^3 - 3v_{\alpha}) \frac{K}{24}$$

Value-at-risk can be computed with this formula or read in the numerical projections of quantiles (in both cases, with the correction referred in a previous footnote).

The charts below give the adjustment of volatilities for various levels of skewness and kurtosis and commonly used levels of Value-at-risk (α).



For a 10% threshold, we see that negative skewness has a cost, but it is reduced when associated with a high kurtosis. As a matter of fact, by reducing the probability of median sized negative events, high kurtosis has the effect of reducing the position of the value-at-risk. This points to a shortcoming of the Value-at-Risk measure (which does not appear in the case of CVaR).

Chart 3b

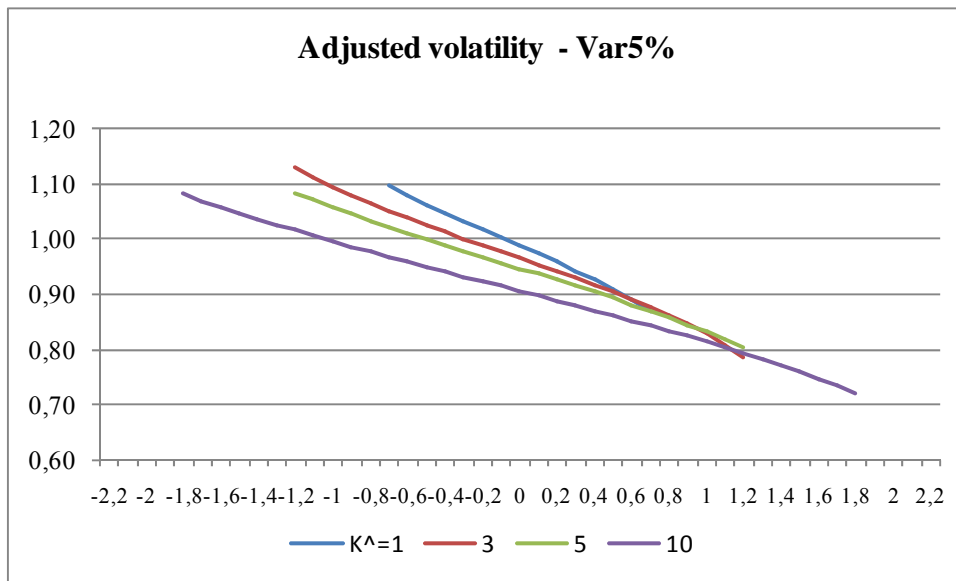
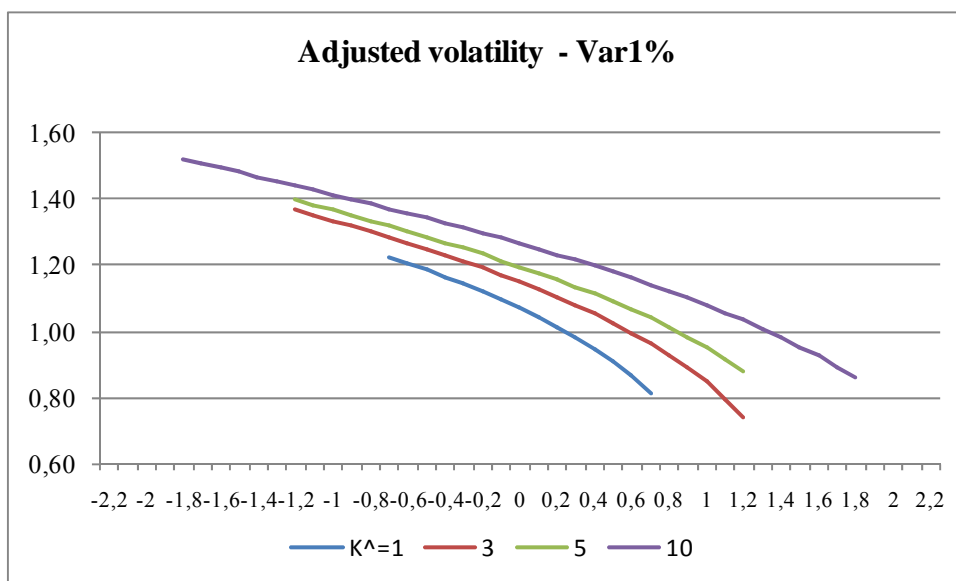


Chart 3c



5 – Adjustment with Conditional Value-at-Risk

As in the case of VaR, there is an analytical expression of CVaR (Maillard, 2012) resulting from the Cornish-Fisher transformation.

$$CvaR_{1-\alpha} = Y_\alpha = y_\alpha - \frac{S}{6} v_\alpha y_\alpha + \frac{S^2}{36} (y_\alpha - 2y_\alpha v_\alpha^2) + \frac{K}{24} (-y_\alpha + y_\alpha v_\alpha^2)$$

$$y_\alpha = \frac{1}{\alpha} \frac{1}{\sqrt{2\pi}} e^{-\frac{z_\alpha^2}{2}}$$

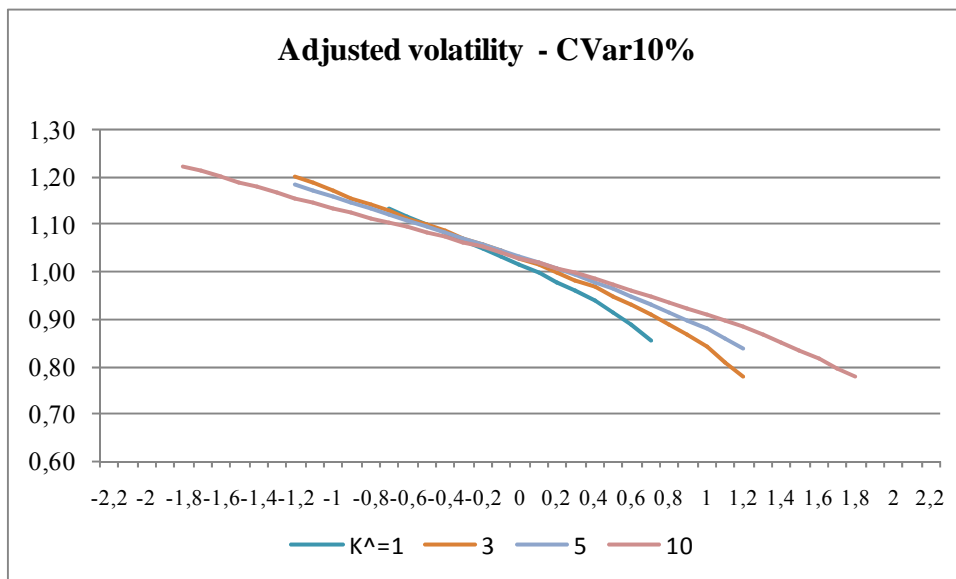
y_α is the CvaR of the normal standard distribution.

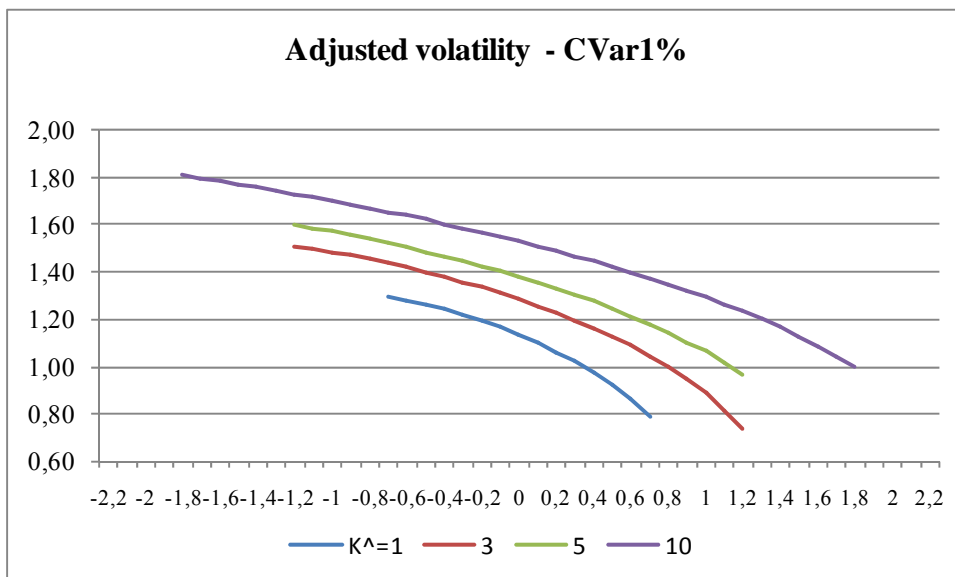
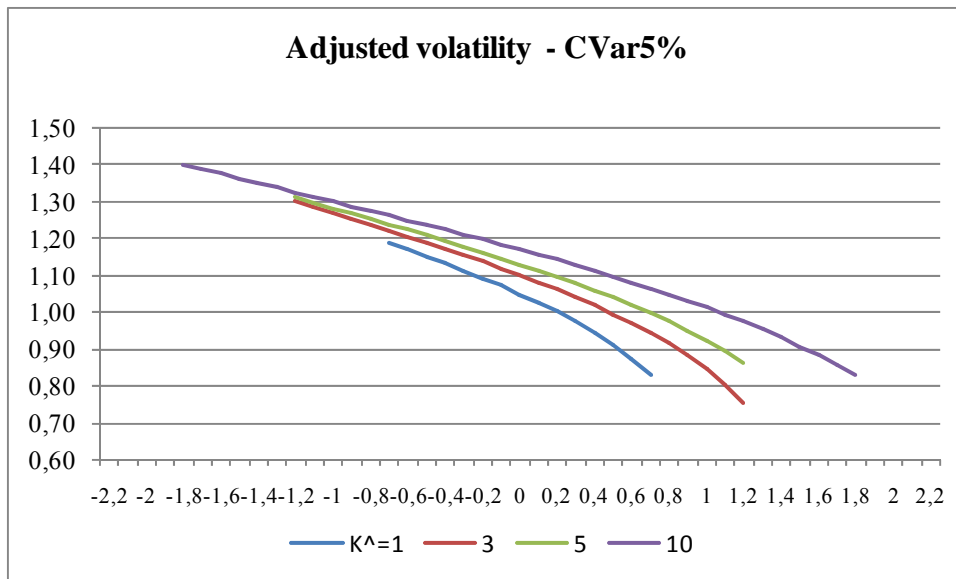
As in the case of VaR, we will define the Tail-risk adjusted volatility by:

$$\frac{\sigma_a}{\sigma} = \frac{Y_\alpha}{y_\alpha}$$

For all thresholds, the adjusted volatility increases with negative skewness.

Chart 4a





6 – Adjustment with Manipulation Performance Measure

The use of Goetzman (&al.) performance measure to assess the impact of tail risk has been extensively described in Maillard (2013b).

As a way to counter all type of manipulation, they propose a Manipulation-Proof Performance measure (MPPM) which writes⁴:

⁴ We stick to the authors' notations, except that we substitute γ for ρ . γ is the usual symbol for denoting a relative risk aversion (RRA), and the parameter in the MPPM measure may be assimilated to a RRA (in the Goetzmann & alii's paper, γ is used for another purpose).

$$\hat{\Theta} = \frac{1}{(1-\gamma)\Delta t} \ln \left(\frac{1}{T} \sum_{t=1}^T \left[\frac{1+r_t}{1+r_{ft}} \right]^{1-\gamma} \right)$$

T is the number of observations, γ is a parameter related to risk aversion, r_{ft} the risk-free rate for period t (assuming such thing still exists...), and Δt the length of the period (in years) on which the return is recorded. r_t is the return of the fund during period t . Implicitly, the risk-free rate acts as a benchmark against which the performance is measured. The ratio in the formula is one plus a geometric excess return x_t . The exponentiation by $1-\gamma$ of the relative performance is there to take risk into account.

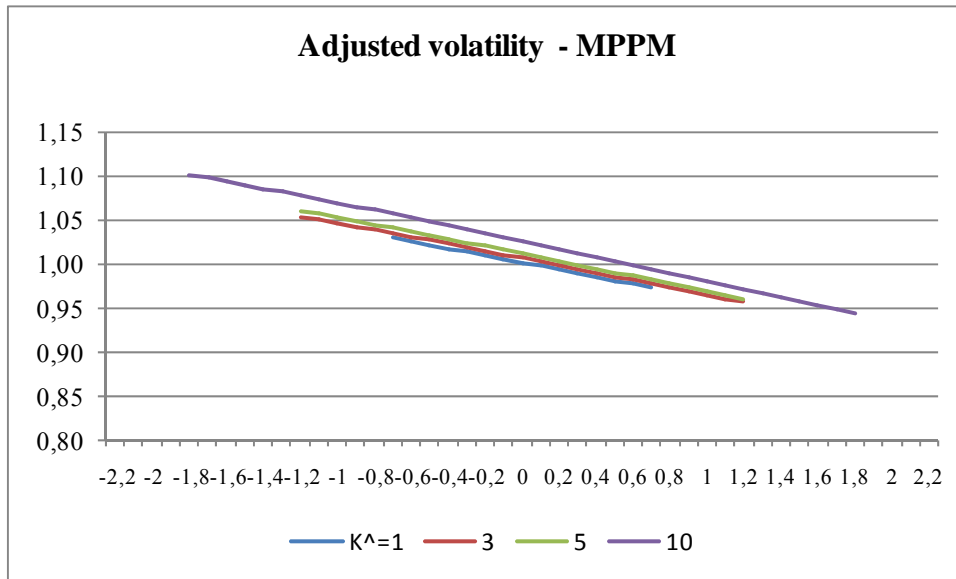
As the authors state, the MPPM is very close to an expected utility, of the power or CRRA (Constant Relative Risk Aversion) form (with RRA equal to γ), of an end-of-period wealth, which an investor would like to optimize. By taking the logarithm and dividing by the length of the period and one minus the risk aversion parameter, they ensure that the measure is equivalent to an equivalent-certain (continuous) rate of return.

The MPPM is very close to the Morningstar Risk-Adjusted Return (MRAR) that this firm uses to compare the performance of various funds (the return computed by Morningstar is in traditional and not continuous form).

The adjusted volatility is the volatility of a Gaussian distribution leading to the same MPPM measure than the non-Gaussian one.

The chart below is computed for $\gamma = 5$ and $\sigma = 6\%$ (usual for monthly returns of a risky asset).

Chart 5



The adjustment depends on the risk aversion parameter used but also on the level of volatility. Kurtosis does not impact much and the relationship with skewness is nearly linear.

7 – Aumann and Serrano-s Index of Riskiness

In a paper (Aumann & Serrano, 2008), Aumann and Serrano propose an economic index of riskiness. For a gamble or a lottery whose pay-off is a random value g , the index of riskiness R is such that:

$$E(e^{-g/R}) = 1$$

Translated into the investment field, the gamble consists of exchanging the risk free rate r_f against the return of a risky asset, so that the pay-off is:

$$g = \mu - r_f + \sigma\varepsilon$$

$$E(\varepsilon) = 0 \quad E(\varepsilon^2) = 1$$

Assuming that the random part of the pay-off has no tail risk, i.e. that ε is normal standard, the index of riskiness verifies:

$$E(e^{-(\mu-r_f+\sigma\varepsilon)/R}) = e^{-(\mu-r_f)/R} E(e^{-\sigma\varepsilon/R}) = e^{-(\mu-r_f)/R} e^{\sigma^2/2R^2} = 1$$

$$(\mu - r_f) / R = \sigma^2 / 2R^2$$

$$R = \frac{\sigma^2}{2(\mu - r_f)}$$

For a non-Gaussian distribution, we will compute the Tail-risk adjusted volatility, after having computed the Economic Index of Riskiness of the distribution R , by

$$\sigma_a = \sqrt{2(\mu - r_f)R}$$

A first exploration, on the assumption of an expected excess return of 4%, a volatility of 20 %, gives an IER of .5 in the Gaussian case.

Increasing excess kurtosis by 3 increases the IER to .52, and increases the Tail-risk adjusted volatility by a factor of 1.02.

From that kurtosis base, adding negative skewness of -1 increases the IER to .5775, and the Tail-risk adjusted skewness by a factor of 1.0745. Conversely, positive skewness of 1 puts the IER to .445, and the volatility is adjusted by a factor of .9425.

8 - Conclusions

We have been able to propose several ways of correcting the Sharpe ratio, and the corresponding volatility, to take into account the higher moments of the distribution, i.e. tail risk.

Some of the measures analysed display an explicit parameter which may be linked to the investor's risk aversion: the thresholds of the VaR and CVaR (and the threshold of the Sortino ratio), the relative risk aversion parameter of the manipulation-proof performance measure.

Others do not display such explicit parameter: semi-variance and the Aumann-Serrano risk measure (though there is some resemblance with an absolute risk aversion equal to 1...).

All in all, there is a wide range of ways to correct the Sharpe Ratio for the existence of tail risk, with keeping the scaling of the measure of risk. The investor may choose its preferred one.

References

Aboura, Sofiane and Didier Maillard, 2014, “Option Pricing under Skewness and Kurtosis using a Cornish Fisher Expansion”, Working Paper

Aumann, Robert J. and Robert Serrano, 2008, “An Economic Index of Riskiness, Journal of Political Economy, 2008

Cornish, E., and R. Fisher, 1937, “Moments and Cumulants in the Specification of Distributions”, *Revue de l'Institut International de Statistiques* 5, 307-320

Amédée-Manesme, Charles-Olivier, Fabrice Barthélémy, “Ex-ante real estate Value at Risk calculation method.”, *Annals of Operations Research*, Vol. 262 (2), 2018.

Amédée-Manesme, Charles-Olivier, Fabrice Barthélémy and Donald Keenan, “Cornish-Fisher Expansion for Commercial Real Estate Value at Risk.”. *The Journal of Real Estate Finance and Economics*, Vol. 50 (4), May 2015

Fenou, Bruno, Mohammad R. Jahan-Parvar and Cédric Okou, 2017, “Downside Variance Risk Premium”, *Journal of Financial Econometrics*, June 2017

Goetzmann, William, Jonathan Ingersoll, Matthew Spiegel, Ivo Welch, 2007, “Portfolio Performance Manipulation and Manipulation-proof Performance Measures”, *The Review of Financial Studies*, I v 20 n 5, 1503-1546

Y. Lemperière, C. Deremble, T. T. Nguyen, P. Seager, M. Potters, J. P. Bouchaud (2014), “Risk Premia: Asymmetric Tail Risks and Excess Returns”, Working Paper, arXiv

Maillard, Didier, 2012, “A User’s Guide to the Cornish Fisher Expansion”, Working Papers Series, SSRN n° 1997178, February 2012

Maillard, Didier, 2013a, “More on Cornish-Fisher: Distribution Density and Boundary Conditions”, SSRN Working Paper n°2236338

Maillard, Didier, 2013b, "Manipulation-Proof Performance Measure and the Cost of Tail Risk", SSRN Working Paper n°2276050

Morningstar, 2006, "The Morningstar RatingTM Methodology", available on line

Sharpe, W. F. (1966). "Mutual Fund Performance". *Journal of Business*. **39** (S1): 119–138

Appendix

Moments of the Cornish-Fisher distribution

$$M1 = 0$$

$$M2 = 1 + \frac{1}{96}K^2 + \frac{25}{1296}S^4 - \frac{1}{36}KS^2$$

$$M3 = S - \frac{76}{216}S^3 + \frac{85}{1296}S^5 + \frac{1}{4}KS - \frac{13}{144}KS^3 + \frac{1}{32}K^2S$$

$$M4 = 3 + K + \frac{7}{16}K^2 + \frac{3}{32}K^3 + \frac{31}{3072}K^4 - \frac{7}{216}S^4 - \frac{25}{486}S^6 + \frac{21665}{559872}S^8 \\ - \frac{7}{12}KS^2 + \frac{113}{432}KS^4 - \frac{5155}{46656}KS^6 - \frac{7}{24}K^2S^2 + \frac{2455}{20736}K^2S^4 - \frac{65}{1152}K^3S^2$$

This leads to the actual values of skewness and (excess) kurtosis:

$$\hat{S} = \frac{M3}{M2^{1.5}} = \frac{S - \frac{76}{216}S^3 + \frac{85}{1296}S^5 + \frac{1}{4}KS - \frac{13}{144}KS^3 + \frac{1}{32}K^2S}{\left(1 + \frac{1}{96}K^2 + \frac{25}{1296}S^4 - \frac{1}{36}KS^2\right)^{1.5}}$$

$$\hat{K} = \frac{M4}{M2^2} - 3 = \frac{\left[3 + K + \frac{7}{16}K^2 + \frac{3}{32}K^3 + \frac{31}{3072}K^4 - \frac{7}{216}S^4 - \frac{25}{486}S^6 + \frac{21665}{559872}S^8 - \frac{7}{12}KS^2\right] \\ + \frac{113}{432}KS^4 - \frac{5155}{46656}KS^6 - \frac{7}{24}K^2S^2 + \frac{2455}{20736}K^2S^4 - \frac{65}{1152}K^3S^2}{\left(1 + \frac{1}{96}K^2 + \frac{25}{1296}S^4 - \frac{1}{36}KS^2\right)^2} - 3$$

Chief Editors

Pascal BLANQUÉ

Chief Investment Officer

Philippe ITHURBIDE

Global Head of Research

Cross asset

INVESTMENT STRATEGY

April 2018 | Working paper

DISCLAIMER

In the European Union, this document is only for the attention of “Professional” investors as defined in Directive 2004/39/EC dated 21 April 2004 on markets in financial instruments (“MIFID”), to investment services providers and any other professional of the financial industry, and as the case may be in each local regulations and, as far as the offering in Switzerland is concerned, a “Qualified Investor” within the meaning of the provisions of the Swiss Collective Investment Schemes Act of 23 June 2006 (CISA), the Swiss Collective Investment Schemes Ordinance of 22 November 2006 (CISO) and the FINMA’s Circular 08/8 on Public Advertising under the Collective Investment Schemes legislation of 20 November 2008. In no event may this material be distributed in the European Union to non “Professional” investors as defined in the MIFID or in each local regulation, or in Switzerland to investors who do not comply with the definition of “qualified investors” as defined in the applicable legislation and regulation. This document is not intended for citizens or residents of the United States of America or to any «U.S. Person», as this term is defined in SEC Regulation S under the U.S. Securities Act of 1933.

This document neither constitutes an offer to buy nor a solicitation to sell a product, and shall not be considered as an unlawful solicitation or an investment advice.

Amundi accepts no liability whatsoever, whether direct or indirect, that may arise from the use of information contained in this material. Amundi can in no way be held responsible for any decision or investment made on the basis of information contained in this material. The information contained in this document is disclosed to you on a confidential basis and shall not be copied, reproduced, modified, translated or distributed without the prior written approval of Amundi, to any third person or entity in any country or jurisdiction which would subject Amundi or any of “the Funds”, to any registration requirements within these jurisdictions or where it might be considered as unlawful. Accordingly, this material is for distribution solely in jurisdictions where permitted and to persons who may receive it without breaching applicable legal or regulatory requirements.

The information contained in this document is deemed accurate as at the date of publication set out on the first page of this document. Data, opinions and estimates may be changed without notice.

You have the right to receive information about the personal information we hold on you. You can obtain a copy of the information we hold on you by sending an email to info@amundi.com. If you are concerned that any of the information we hold on you is incorrect, please contact us at info@amundi.com

Document issued by Amundi, a société anonyme with a share capital of €1,086,262,605 - Portfolio manager regulated by the AMF under number GPO4000036 - Head office: 90 boulevard Pasteur - 75015 Paris - France - 437 574 452 RCS Paris - www.amundi.com

Photo credit: iStock by Getty Images - monsitj/Sam Edwards

Find out more about
Amundi research team

research-center.amundi.com

Amundi
ASSET MANAGEMENT